

ADOTTA METIS

ACOUSTIC & SOCIAL DISTANCING
WORKPLACE SYSTEM







DETAILS

CEILING

GLASS

ADHESIVE STRIPS

WALL SUPPORT - PANEL FIXING

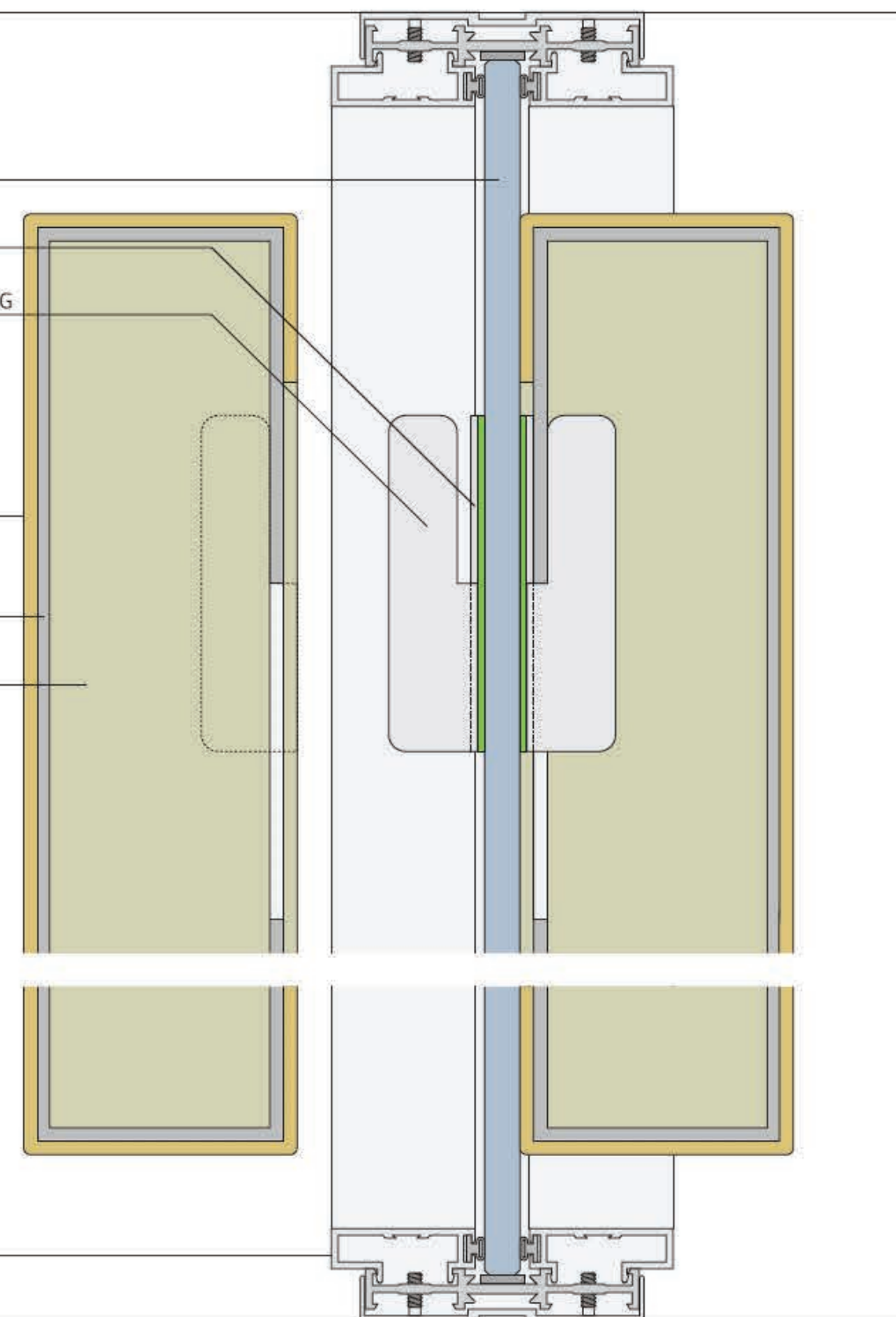
FINISH OVERLAY
(FABRIC, THERMOFORMED)

ALUMINIUM FRAME /
FOLDED METAL SHEET

ACOUSTIC ABSORBER

METAFORA PROFILE

FLOOR





PROGRAM

STANDARD

ROUNDED

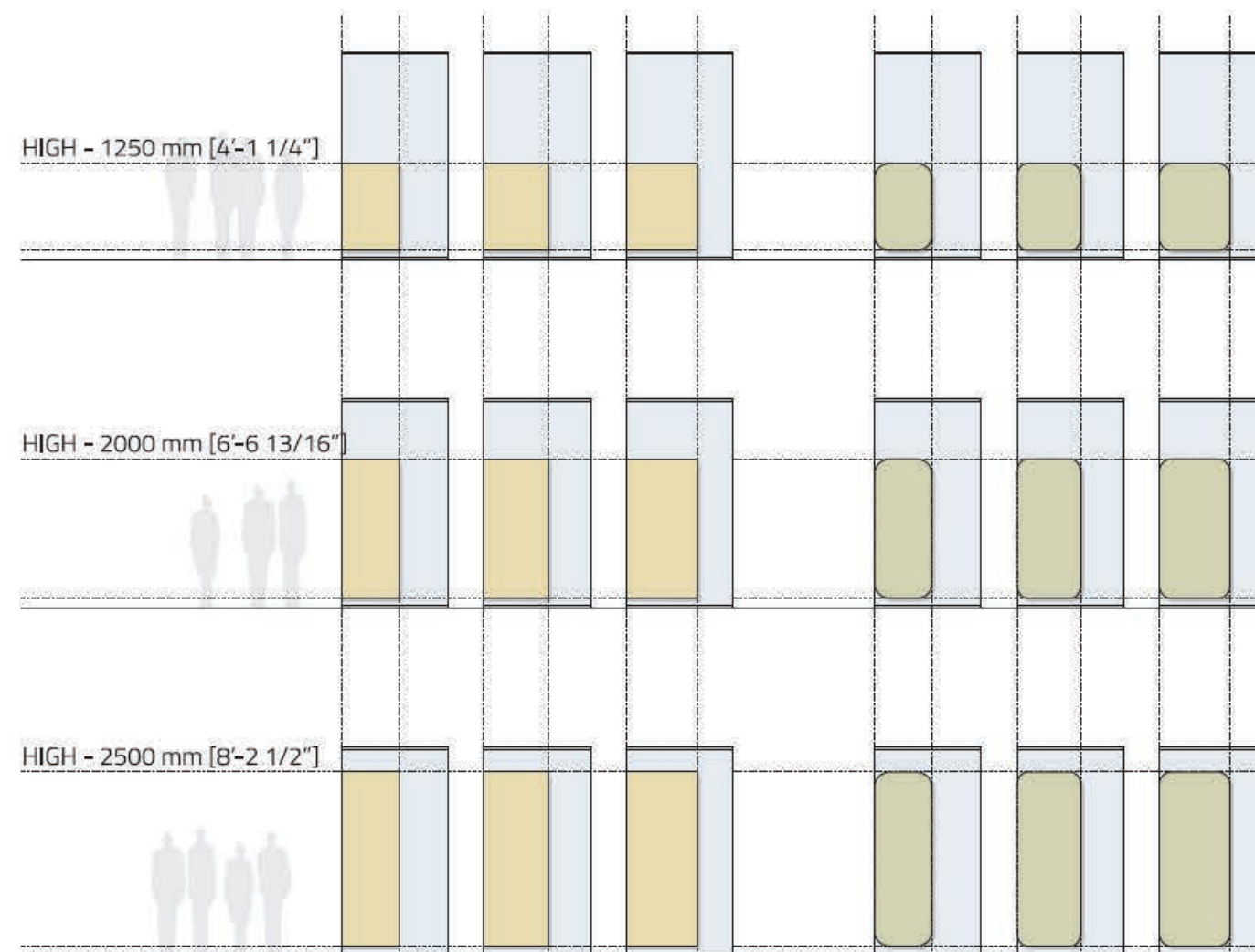
MODULE 80	MODULE 90	MODULE 100
800 mm	900 mm	1000 mm
[2'-7 1/2"]	[2'-11 7/16"]	[3'-3 3/8"]

MODULE 80	MODULE 90	MODULE 100
800 mm	900 mm	1000 mm
[2'-7 1/2"]	[2'-11 7/16"]	[3'-3 3/8"]

HIGH - 1250 mm [4'-1 1/4"]

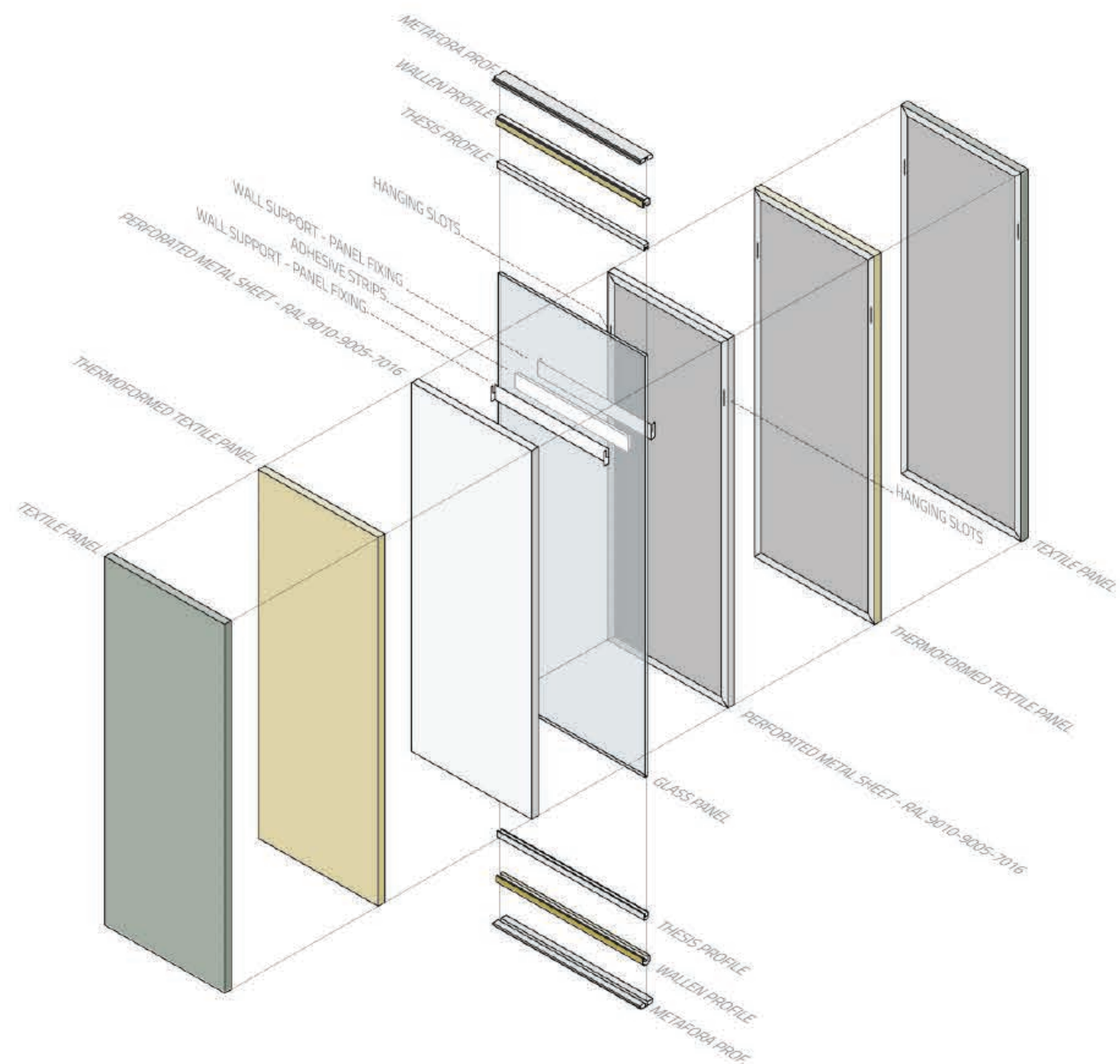
HIGH - 2000 mm [6'-6 13/16"]

HIGH - 2500 mm [8'-2 1/2"]



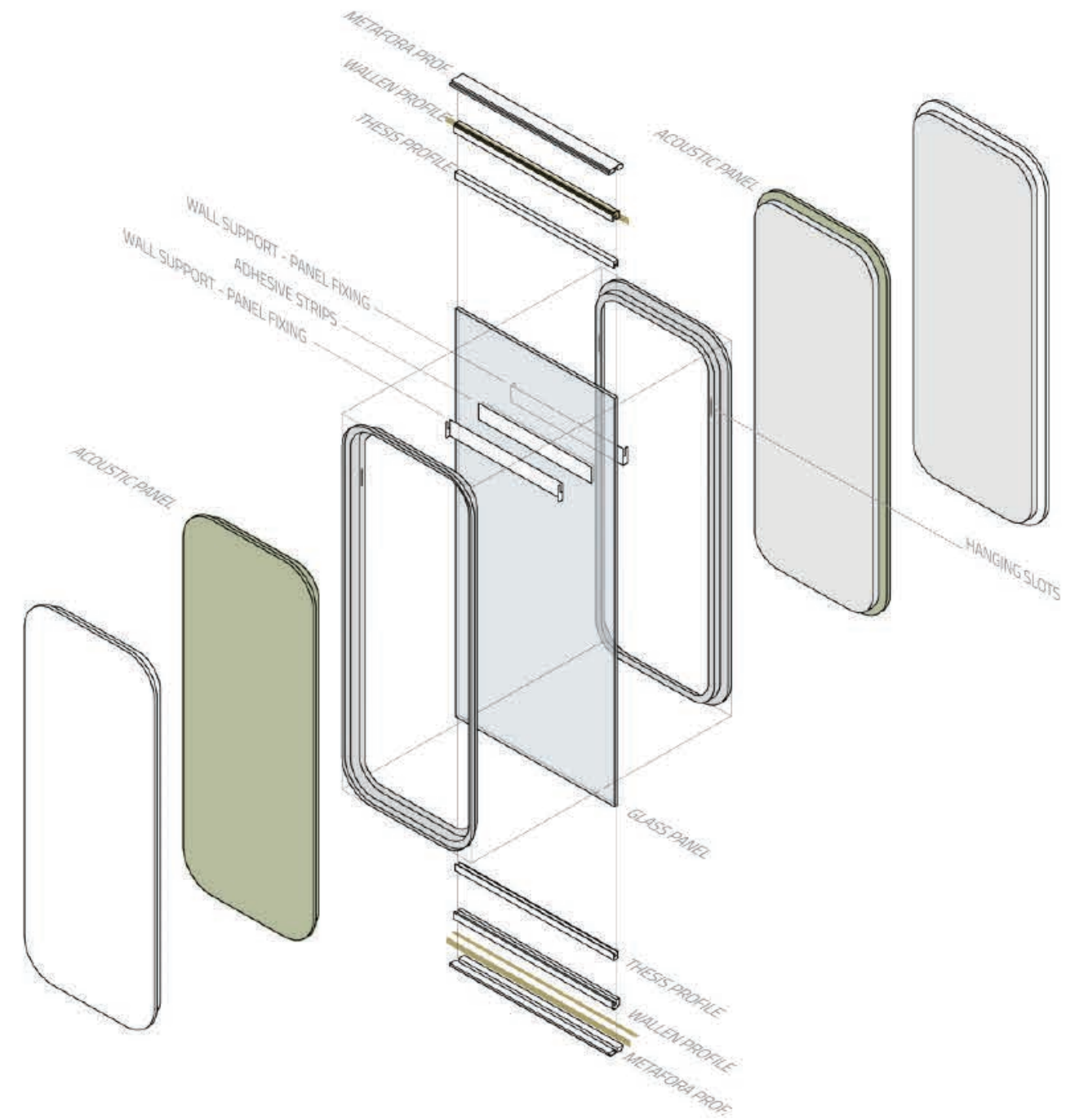


COMPONENTS





COMPONENTS



FINISHES



FABRIC

PERFORATED
METAL SHEET

THERMOFORMED
FABRIC

LIGHT GREY
LINDEN GREEN
OCHRE YELLOW

PURE WHITE - RAL 9010
BLACK - RAL 9005
ANTHRACITE - RAL 7016

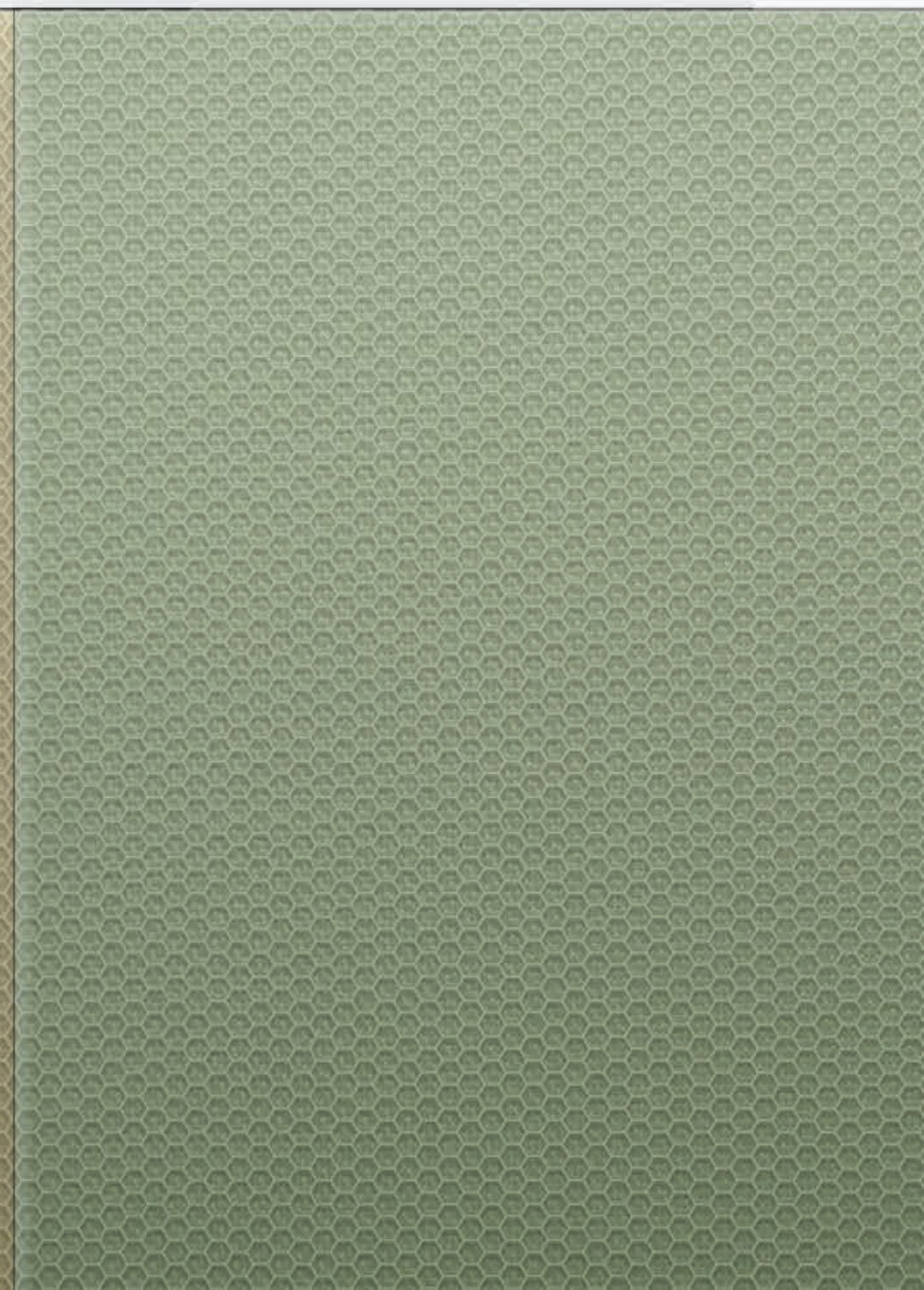
LIGHT GREY
LINDEN GREEN
AZUR BLUE

FINISHES - FABRIC

LIGHT GREY

OCHRE YELLOW

LINDEN GREEN

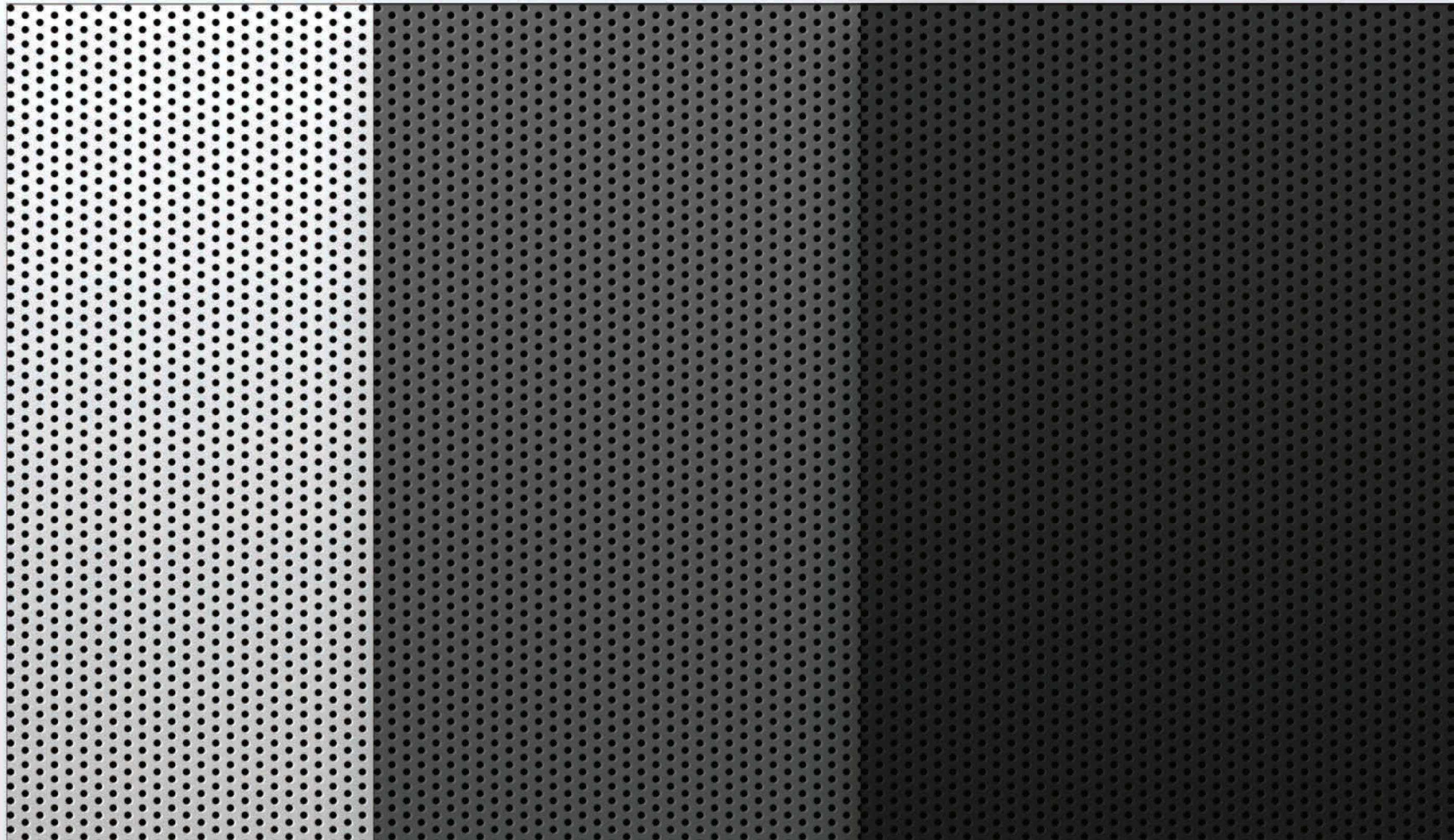


PURE WHITE - RAL 9010

BLACK - RAL 9005

FINISHES - PERFORATED METAL SHEET

ANTHRACITE - RAL 7016

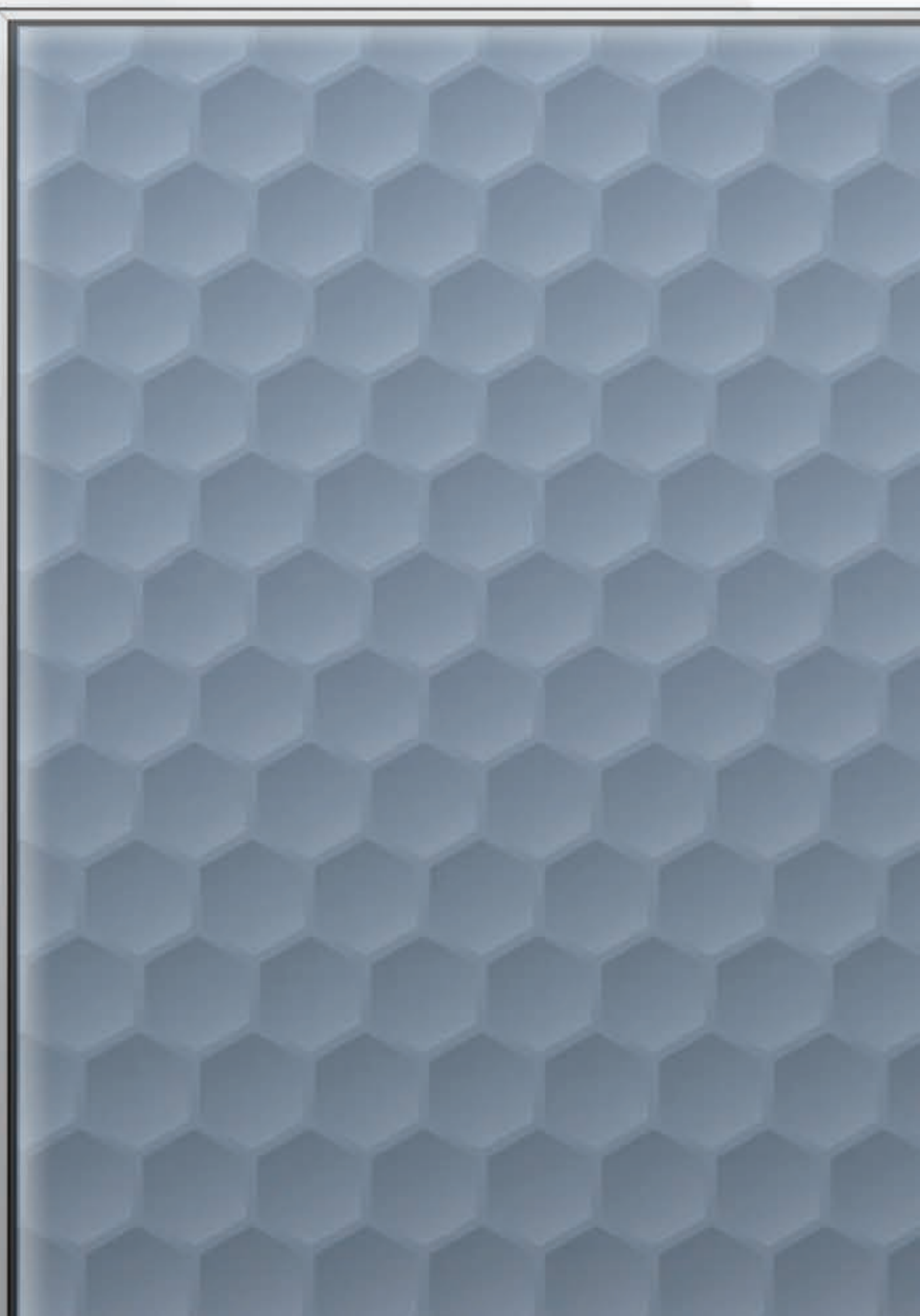


FINISHES - THERMOFORMED FABRIC

LIGHT GREY

LINDEN GREEN

AZUR BLUE









TECHNICAL DETAILS

DESCRIPTION

Adotta Metis A&SC is an acoustical wall system made from thermally bonded polyester fibres, installed on both sides of glass partition walls.

Having a beautiful and warm surface, not only improves room acoustics of office spaces but also contributes to the architectural design of spaces.

With a thickness of 80 mm the element offers high absorption in all frequency ranges.

Adotta Metis A&SC System increases the acoustical absorption of a partition wall and reduces the reverberation time of the room.

APPLICATION

Adotta Metis A&SC can also be installed on existing building walls.

The system, can turn acoustically reflecting surfaces into 100% acoustically absorbing surfaces: Improves the acoustical absorption and reduces reverberation times.

SPECIFICATIONS

Flammability class: B1 hardly flammable (according to German standard DIN 4102).

Acoustical absorption: $\alpha_w = 1.15$ (according to German standard DIN EN ISO 11654).

DIMENSIONS

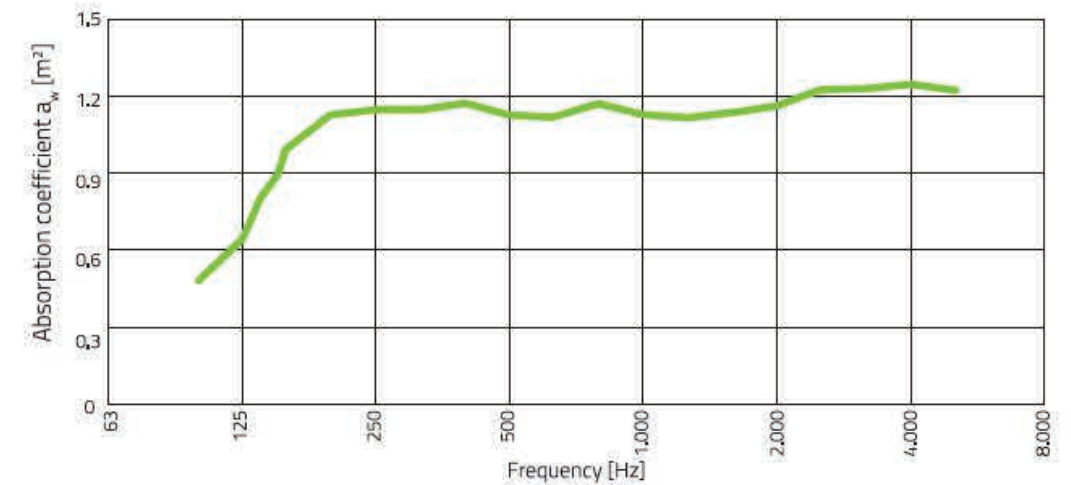
WIDTH: 800 mm [2'-7 1/2"] / 900 mm [2'-11 7/16"] / 1000 mm [3'-3 3/8"]

HIGH: 1250 mm [4'-1 1/4"] / 2000 mm [6'-6 13/16"] / 2500 mm [8'-2 1/2"]

THICKNESS: 80 mm

Special dimensions on request.

ABSORPTION COEFFICIENT





LAYOUTS

EXAMPLE 01

Open space offices with various different usage requirements.

Layout configured with glass partition walls and sound absorbing elements.

Use of modules of different heights.

Team and operative zones / concentration areas.





LAYOUTS

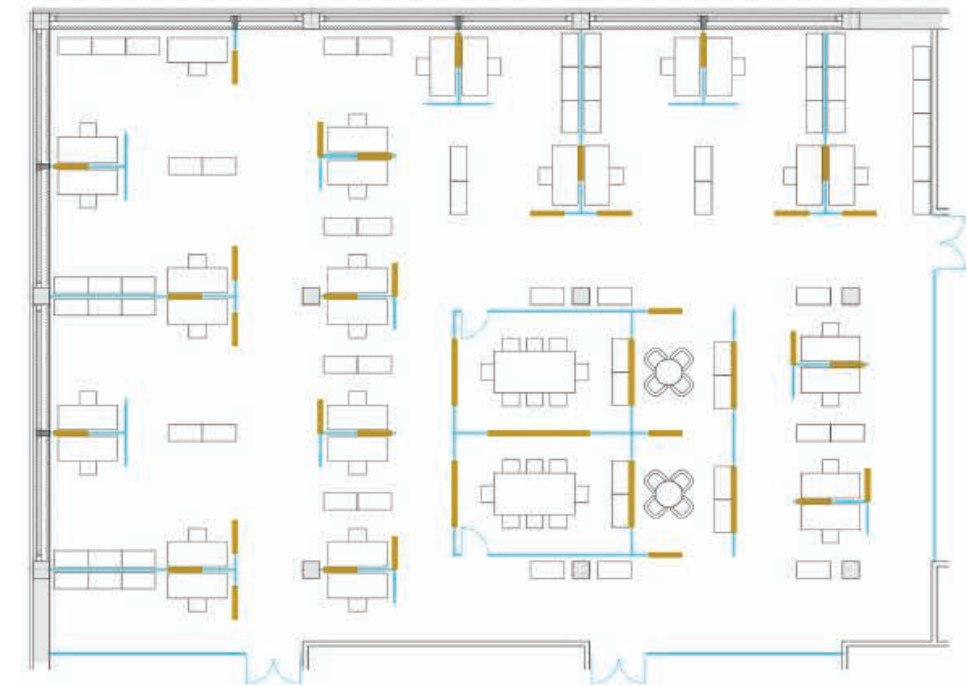
EXAMPLE 02

Open space offices with various different usage requirements.

Square layout configured with glass partition walls and sound absorbing elements. Central meeting and operative areas.

Use of modules of different heights.

Acoustical challenges due to reflecting concrete ceiling for cooling.





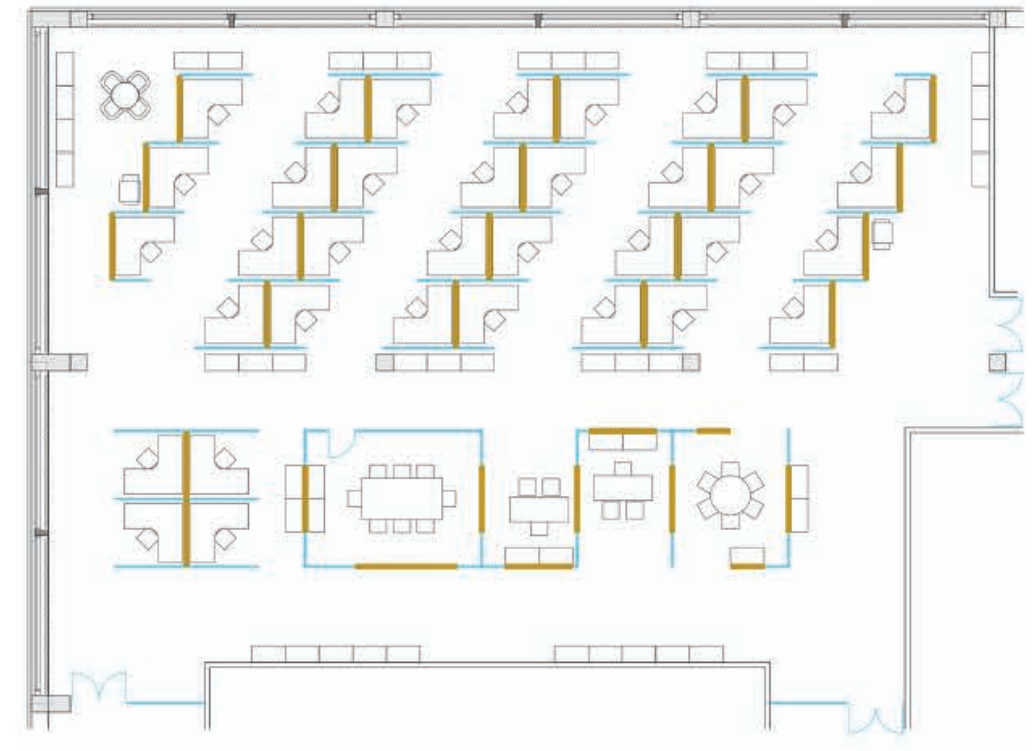
LAYOUTS

EXAMPLE 03

Herringbone Layout configured with glass partition walls and sound absorbing elements.

Use of modules of different heights.

Separate operative and meeting areas —acoustical protected from each other.





LAYOUTS

EXAMPLE 04

Open space offices with shifted layout, configured with glass partition walls and acoustic absorbing elements.

Use of modules of different heights.

Separated collective and operative zones and concentration areas, acoustical protected from each other.













ADOTTAITALIA.COM

ADOTTA ITALIA srl
Vie delle Pastorelle, 10
36016 Thiene (VI) - Italia
T +39 0444 960 096
F + 39 0444 563 341
info@adottaitalia.com

ADOTTA AMERICA
500 Nordhoff Place - Suite 5
Englewood, NJ 07631 - USA
T 1-833-4-ADOTTA
info@adottaamerica.com
adottaamerica.com

PARIS
NEW YORK
MUNICH
WASHINGTON DC
MIAMI
LOS ANGELES
TORONTO
HOUSTON
ZURICH

