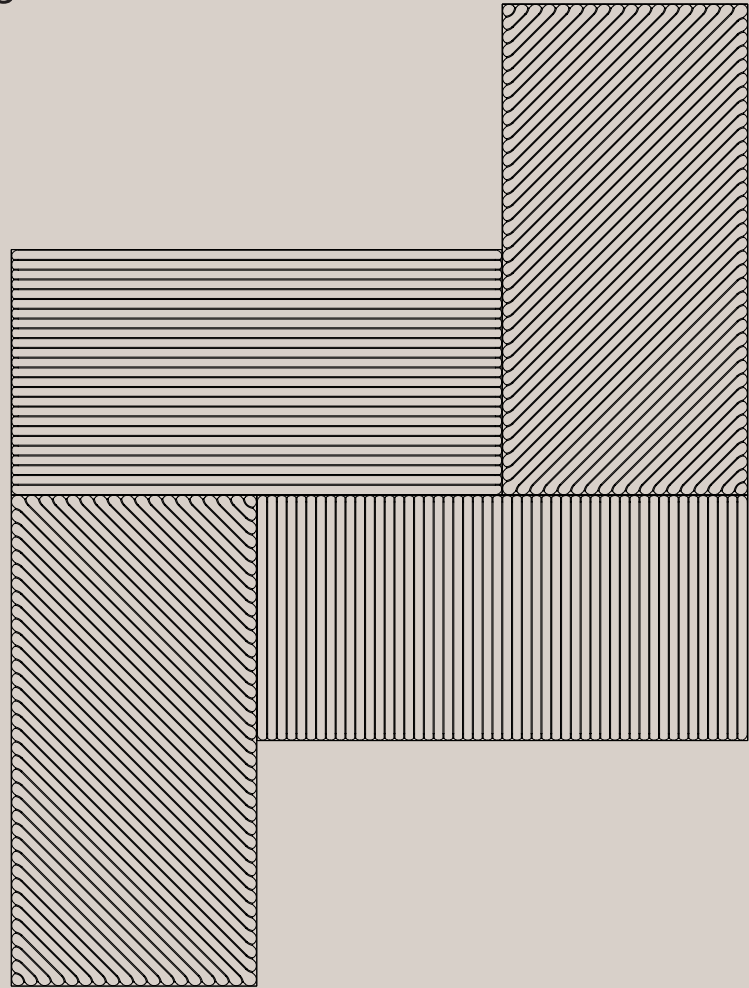


IMPACT ACOUSTIC®



HABITAT
MATTER

habitatmatter.com
spec@habitatmatter.com



Archisonic® Cotton Wall Tiles

938.12.24.000.00

938.13.24.000.00

938.14.24.000.00



Archisonic Cotton Tile

General Information



Data

Applicable article numbers

938.12.24.000.00 938.13.24.000.00 938.14.24.000.00

Dimensions¹

| | | |
|-----------|-------|-------|
| Length | 600mm | 23.6" |
| Height | 300mm | 11.8" |
| Thickness | 24mm | 0.9" |

Material

Wall Covering Archisonic ® Cotton (100% circular) in 24 colors

Weight²

24mm / 0.95" 5.5 kg/m² 1.13 lbs/ft²

Included

Archisonic Cotton
Tiles (28 pieces)



Installation
guide



Take back
program

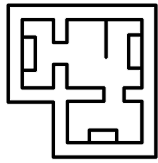


1 - all dimensions are nominal 2 - all weights are nominal

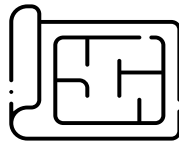


Archisonic Cotton Tile Specification Guide

1 Prepare this information:



Project Area

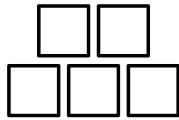


Plans

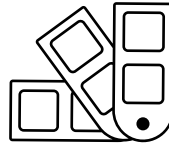


Other Considerations

2 Specify your Cotton Tile:



Quantity
(multiple of 28 tiles - 5m²/ 53.8ft²)*



Color
page 9-11

* - Archisonic Cotton Tiles are supplied in a pack of 28 tiles (5m²/ 53.8ft²)

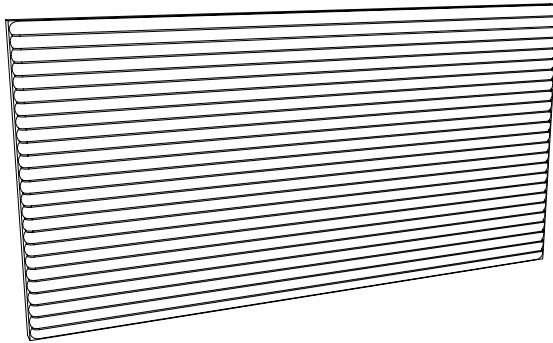


Archisonic Cotton Tile

Product Family Overview

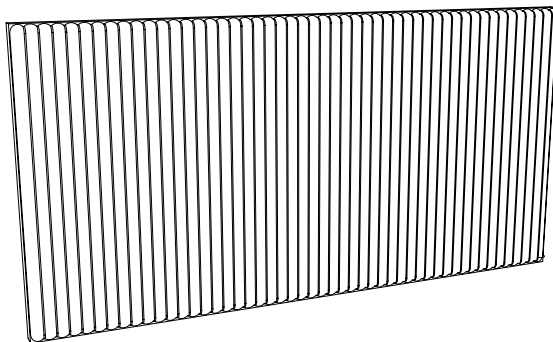
1 Longitude

938.12.24.000.00 - Longitude Pattern Tile



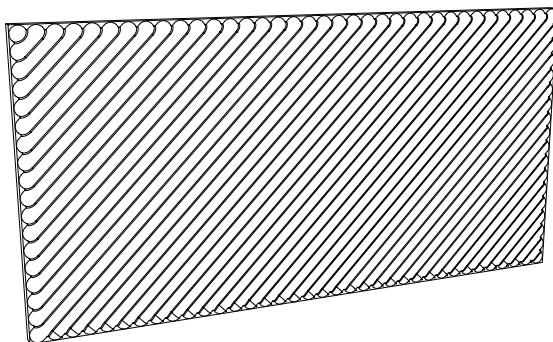
2 Latitude

938.13.24.000.00 - Latitude Pattern Tile



3 Diagonal

938.14.24.000.00 - Diagonal Pattern Tile

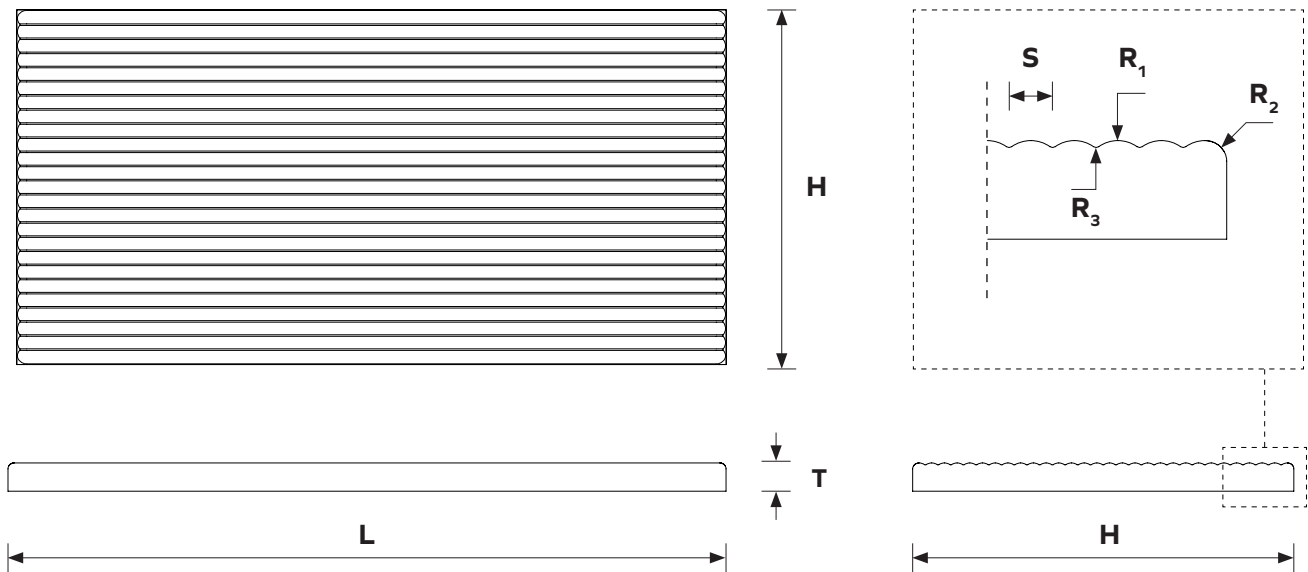




Archisonic Cotton Tile

Geometry Information

Longitude 938.12.24.000.00



Dimensions table

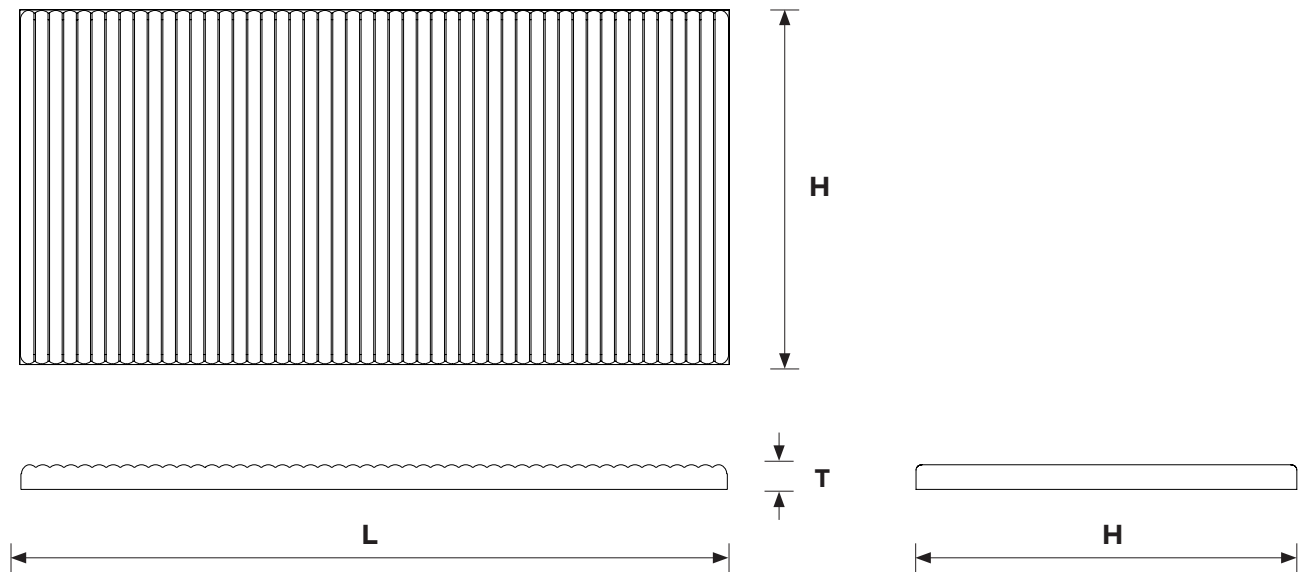
| | | | |
|----------------------|-----------|--------|-------|
| L | Lenght | 600 mm | 23.6" |
| H | Height | 300 mm | 11.8" |
| T | Thickness | 24 mm | 0.9" |
| S | Spacing | 10 mm | 0.39" |
| R₁ | Radius | 7 mm | 0.27" |
| R₂ | Radius | 5 mm | 0.2" |
| R₃ | Radius | 1 mm | 0.05" |



Archisonic Cotton Tile

Geometry Information

Latitude 938.13.24.000.00



Dimensions table

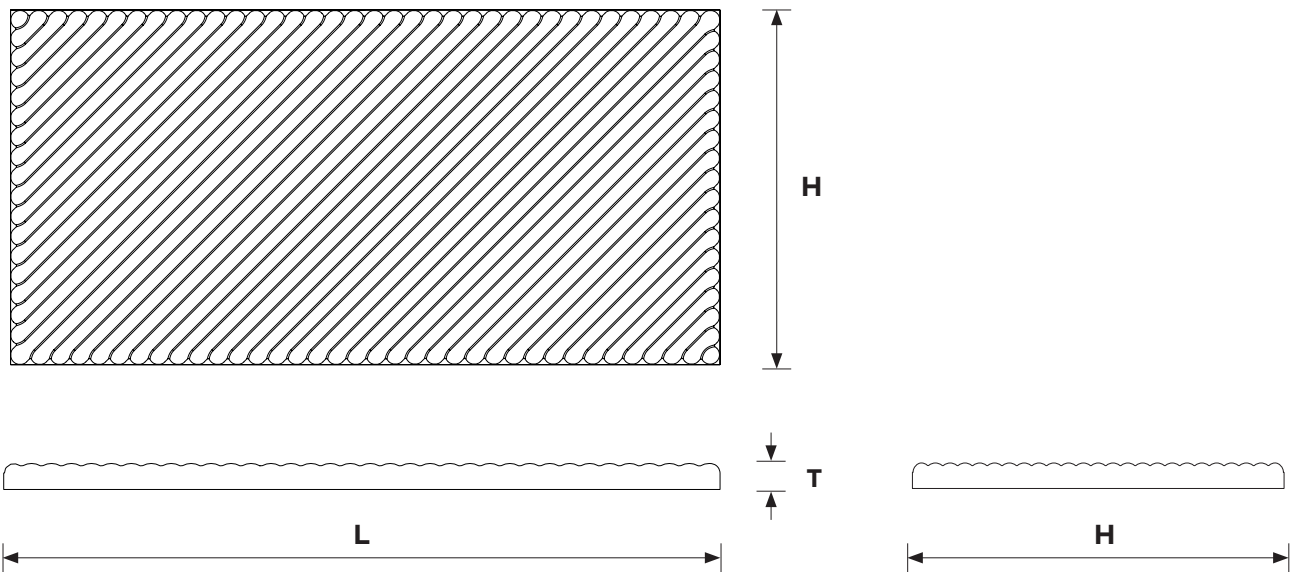
| | | | |
|----------------------|-----------|--------|-------|
| L | Lenght | 600 mm | 23.6" |
| H | Height | 300 mm | 11.8" |
| T | Thickness | 24 mm | 0.9" |
| S | Spacing | 10 mm | 0.39" |
| R₁ | Radius | 7 mm | 0.27" |
| R₂ | Radius | 5 mm | 0.2" |
| R₃ | Radius | 1 mm | 0.05" |



Archisonic Cotton Tile

Geometry Information

Diagonal 938.14.24.000.00



Dimensions table

| | | | |
|----------------------|-----------|--------|-------|
| L | Lenght | 600 mm | 23.6" |
| H | Height | 300 mm | 11.8" |
| T | Thickness | 24 mm | 0.9" |
| S | Spacing | 10 mm | 0.39" |
| R₁ | Radius | 7 mm | 0.27" |
| R₂ | Radius | 5 mm | 0.2" |
| R₃ | Radius | 1 mm | 0.05" |



Archisonic Cotton Tile

Installation Overview

1

Before starting, carefully read the general instructions on page 3 and the guidelines on the use.

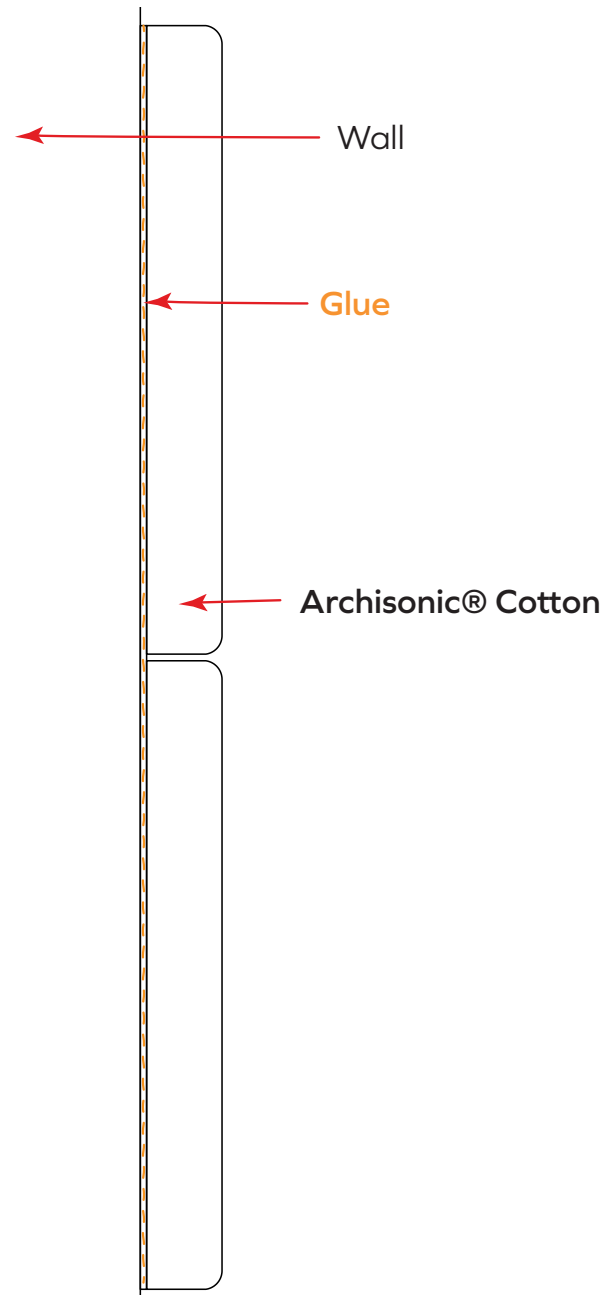
2

Draw the fundamental guidelines for the construction of the pattern on the application surface (we recommend always starting from a continuous vertical or horizontal line, when possible).

3

Apply the tiles to the wall, taking care to carefully follow the established pattern (follow the instructions on applying the glue).

Impact Acoustic recommends the use of Pattex No More Nails and assumes no responsibility for non-recommended glues or the use of other fixing systems.





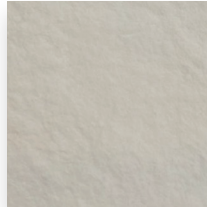
ARCHISONIC®

Colours

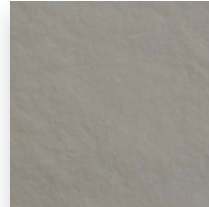
Neutrals

24 mm

Neither warm nor cool, this group features three tones of Shadow. Designer White, as the cleanest white available is an essential standalone colour.



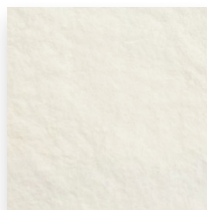
Shadow
20



Shadow
30



Shadow
50

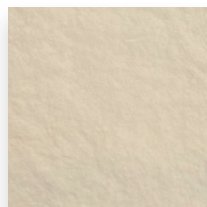


Designer White
00

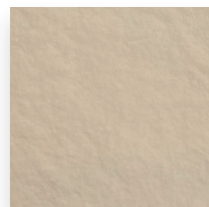
Warm Neutrals

24 mm

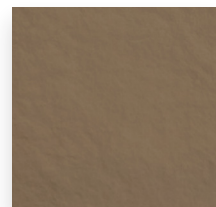
A timeless and classic warm neutral scale represented by three tones of Flax.



Flax
10



Flax
30



Flax
50



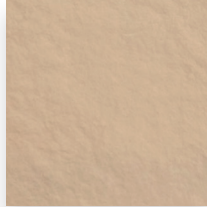
ARCHISONIC®

Colours

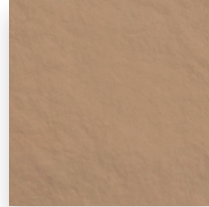
Yellows+Oranges

24 mm

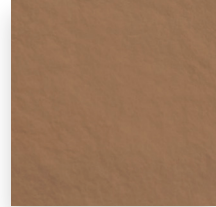
A duo tone of Wheat and three tones of Almond create a small group of yellows and oranges.



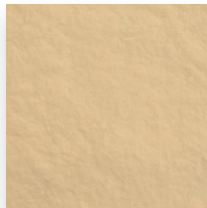
Almond
20



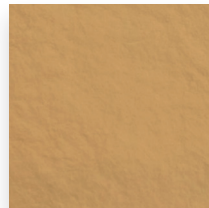
Almond
30



Almond
40



Wheat
30

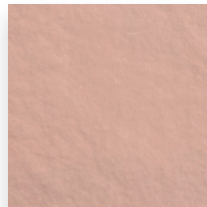


Wheat
50

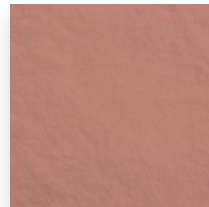
Reds+Pinks+ Purples

24 mm

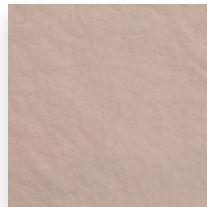
Featuring a duo tone of Rose and a duo tone of the shaded red, Pigeon.



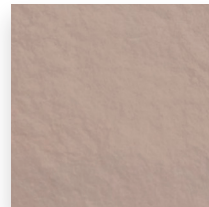
Rose
20



Rose
50



Pigeon
20



Pigeon
30



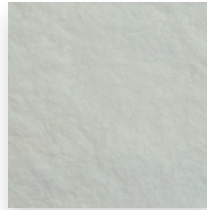
ARCHISONIC®

Colours

Blues

24 mm

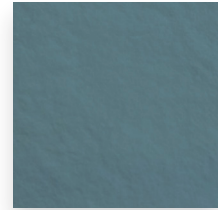
A classic, easy blue scale represented by three tones of Denim.



Denim
10



Denim
30

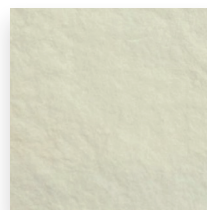


Denim
40

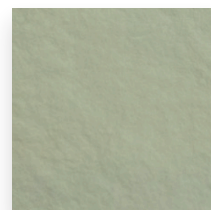
Greens

24 mm

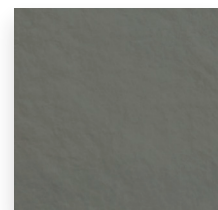
A duo tone of the fresher Aloe and three tones of the more shaded Sage create a commercial group of greens.



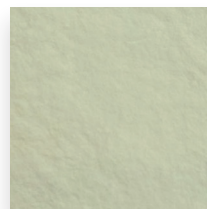
Sage
10



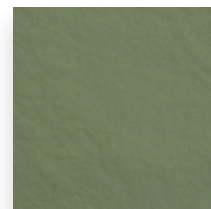
Sage
30



Sage
50



Aloe
30



Aloe
50



ARCHISONIC®

Cotton

Density

250kg/m³
15.6lbs/ft³ (+/-10%)

Tile thickness

24mm
0.94" (+/-10%)

Composition

73% cotton cellulose, 26% mineral components
(micronized kaolin, colouring earths, fireproof salts),
<1% acrylic resin

Fire rating

B-s1, d0 **Class 1**
EN ISO 13823:2010
(tested with Pattex adhesive)

VOC emission

A+
UNI EN ISO 16000-9: 2006 + ISO 16000-6: 2011

Care instructions

Gently clean with a vacuum cleaner or a dry cloth.
Do not use water, soap or liquid detergents.



EN 15102: 2007 + A1: 2011
0497



Archisonic Cotton Tile

NCS Colour Codes

Developed by Colour Hive

| | | | | | |
|--------------------|--------------------|--------------------|--------------------|--------------------|--------------------|
| Neutrals | Shadow 20 | Shadow 30 | Shadow 50 | Designer White 00 | |
| NCS Code | S 1500 N | S 4000 N | S 7500 N | S 0300-N | |
| Warm Neutrals | Flax 10 | Flax 30 | Flax 50 | | |
| NCS Code | S 0603-Y40R | S 3010-Y30R | S 5010-Y30R | | |
| Yellows+Oranges | Almond 20 | Almond 30 | Almond 40 | Wheat 30 | Wheat 50 |
| NCS Code | S 0907-Y50R | S 2010-Y50R | S 5020-Y50R | S 0515-Y20R | S 1030-Y20R |
| Reds+Pinks+Purples | Rose 20 | Rose 50 | Pigeon 20 | Pigeon 30 | |
| NCS Code | S 1020-Y90R | S 2020 Y90R | S 2010-Y90R | S 4010-Y90R | |
| Blues | Denim 10 | Denim 30 | Denim 40 | | |
| NCS Code | S 0505-B | S 3010-B | S 4020-B | | |
| Greens | Sage 10 | Sage 30 | Sage 50 | Aloe 30 | Aloe 50 |
| NCS Code | S 1505-G50Y | S 2005-G50Y | S 6005-G50Y | S 1010 G30Y | S 4020-G30Y |

These NCS codes are the closest visual match available and may not be exact to natural pigments.

Circularity

ARCHISONIC® Cotton addresses the issue of sound absorption while being fully circular. Circularity refers to the idea of designing products and processes that are inherently restorative and regenerative. This means that they aim to eliminate waste and pollution while creating a closed-loop system in which resources are used efficiently and sustainably.

ARCHISONIC® Cotton embodies this concept by using only natural and renewable materials in its production process. The main component of the material is cellulose derived from cotton linters, a by-product of the cotton industry that would otherwise be discarded. The production process is also designed to be circular, recycling, and reusing water and minimising waste.

Handcrafted in Italy.



Archisonic Cotton Tile

Acoustic Performance

Testing Standards



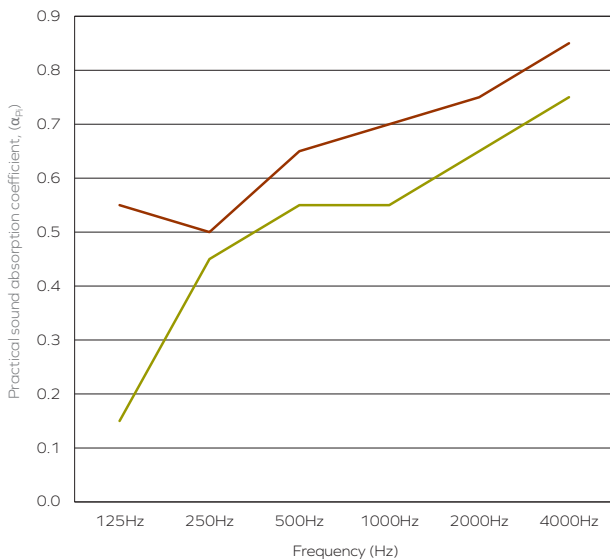
| | |
|----------------|---|
| ISO 354:2003 | Acoustics — Measurement of sound absorption in a reverberation room |
| ISO 11654:1997 | Acoustics — Sound absorbers for use in buildings — Rating of sound absorption |
| ISO 20189:2018 | Acoustics — Screens, furniture and single objects intended for interior use — Rating of sound absorption and sound reduction of elements based on laboratory measurements |
| ASTM C423-17 | Standard Test Method for Sound Absorption and Sound Absorption Coefficients by the Reverberation Room Method |
| ASTM E795-16 | Standard Practices for Mounting Test Specimens During Sound Absorption Tests |

Acoustic Test Results

| | α_w | SAA | NRC |
|---|------------|------|------|
| Archisonic Cotton 24mm | 0.60 (H) | 0.56 | 0.55 |
| Archisonic Cotton 24mm with 50mm insulation | 0.70 (H) | 0.66 | 0.65 |

Acoustic Performance

| Frequency (Hz) | | 125 | 250 | 500 | 1000 | 2000 | 4000 |
|---|---------------|------|------|------|------|------|------|
| Archisonic Cotton 24mm | α_{pi} | 0.15 | 0.45 | 0.55 | 0.55 | 0.65 | 0.75 |
| Archisonic Cotton 24mm with 50mm insulation | α_{pi} | 0.55 | 0.50 | 0.65 | 0.70 | 0.75 | 0.85 |



- Archisonic Cotton 24mm
- Archisonic Cotton 24mm with 50mm insulation

The graph represents the practical sound absorption coefficients (α_{pi}) in the third octave band center frequencies. Measurement used Pink Noise as excitation signal in a reverberant room.



Archisonic Cotton Tile

Additional Information

Online Resources

A variety of resources are available online for all of our products. Please visit the product's page for more information.



CAD files



Spec sheets and
Installation Guide



Color families



Instruction
videos



Associated
products specs.

Ordering Process

Our experienced team of Project Consultants will guide and support you throughout the order process. We fulfill the majority of our orders in as little as 21 days¹ from your first point of contact, allowing you to focus on what truly matters to you.



Contact our
consultant

Quote¹

1-2 day



Order Confirmation

Production¹

2-3 weeks



Dispatch

Transit

location-dependent



Delivery

Contact Us

Ready to make an impact? We are just an email or call away to discuss your project and answer any question.



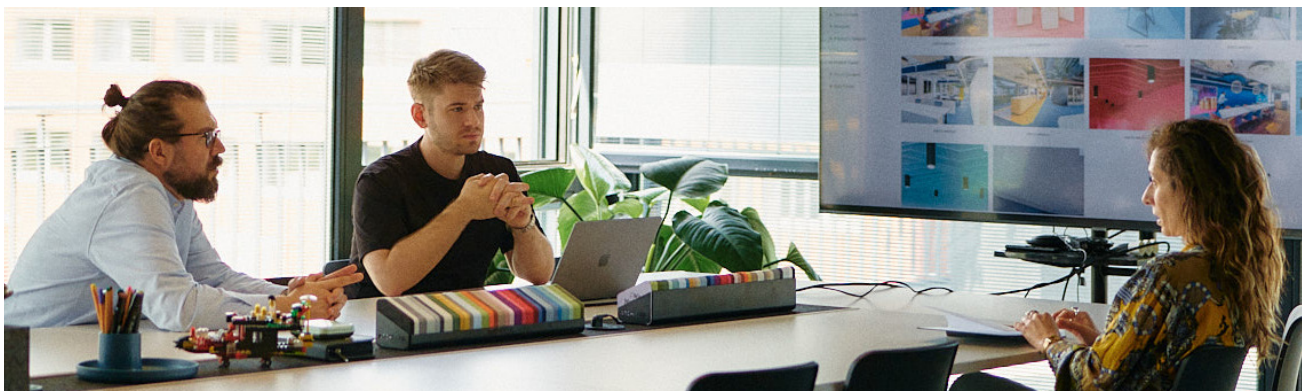
+41 41 566 55 55



connect@impactacoustic.com



Online form



¹ - Quote and Production times may vary.

#We Make An Impact



connect@impactacoustic.com | www.impactacoustic.com